

# ***RTP NUTRUNNER***

Slim, light, powerful – heavy duty  
bolting has never been this easy!



---

*Atlas Copco*

---





# RTP

## PNEUMATIC NUTRUNNER

LIGHT  
WEIGHT



HIGH  
ACCURACY



ACCESSIBILITY



### CHECK OUT THE NEW RTP!

Whatever your industry, if your operations include loosening or tightening heavy duty bolts, Atlas Copco's slim, lightweight RTP pneumatic nutrunner can help increase your productivity.

### EASY ON THE OPERATOR

The light weight of the RTP nutrunner will surprise you, yet its high speed motor has the power you need to tighten big bolts. A robust, lightweight reaction bar absorbs the torque. Noise and vibration levels are lower than in traditional impact wrenches.

### EXCELLENT ACCESSIBILITY, HIGH ACCURACY

Among the smallest on the market, the RTP's slim gearpack gives you effortless access to bolts in cramped spaces. Tightening accuracy and repeatability are high.

### FLEXIBLE AND SAFE

Plug & play! Simply connect the RTP to your air line and start working with it. Since the tool works at low pressure, compared to hydraulic torque wrenches, safety is high. The torque output of the RTP is adjusted with an Atlas Copco FRL air pressure unit, helping to prolong

the lifetime and torque accuracy of the tool. The tool's exchangeable drive simplifies maintenance and cuts repair costs.

### A RELIABLE PARTNER FOR YOUR OPERATION

A handy tool for flange-related and other bolting applications in the Oil & Gas, Power Generation, and Wind Energy segments, the RTP nutrunner will also be a valuable asset for reman (remanufacturing), maintenance, repair and overhaul operations in the Mining and Offroad segments.





## RTP NUTRUNNER KIT

Model	Bolt size mm	Square drive in	Min torque at 3 bar		Max torque at 6.3 bar		Free speed r/min	Weight <sup>a</sup>		Length mm	CS distance mm	Air consumption at free speed		Rec. hose size mm	Air inlet thread in	Ordering No.
			Nm	ft lb	Nm	ft lb		kg	lb			l/s	cfm			
RTP4100-HR25	30-45	1	1850	1365	4100	3097	10	8.7	19.2	335	42	31	65.5	13	3/8	8431 1040 10
RTP1300-HR20	20-27	3/4	560	413	1300	1000	20	3.7	8.2	248	34	23	48.7	13	3/8	8431 1013 10

<sup>a</sup> Weight excluding reaction bar.

**NOTE:** For all models in the table declared noise and vibration emissions according to ISO 28927-2 and ISO 15744.

Sound pressure level for RTP4100-HR25 is 90 dB(A), for RTP1300 HR20 86 dB(A) and vibration value for both models are <2.5 m/s<sup>2</sup>.

## ACCESSORIES INCLUDED

Model	Description	Ordering No.
RTP1300	Reaction bar, S-type	4210 4480 90
RTP4100	Reaction bar, S-type	4210 4480 93
RTP1300 / 4100	Nipple, ErgoNIP 10. M10, BSP	8202 1220 19
RTP1300 / 4100	Productivity kit FRL stand, BSP <sup>b</sup>	9090 3030 02

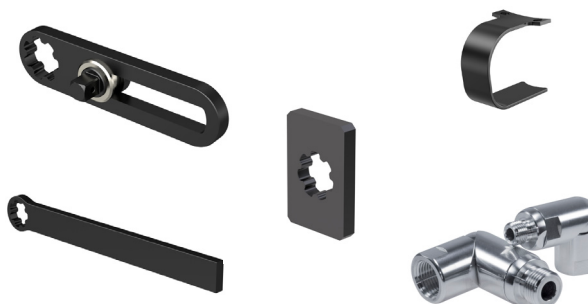
<sup>b</sup> Hose included



## OPTIONAL ACCESSORIES

Model	Description	Ordering No.
RTP1300 / 4100	MultiFlex swivel 3/8 BSP	8202 1350 22
RTP1300 / 4100	Trigger guard	4210 4759 90
RTP1300	Reaction bar, sliding-drive	4210 4752 90
RTP1300	Reaction bar, steel bar	4210 4757 90
RTP1300	Reaction bar, square bracket	4210 4758 90
RTP4100	Reaction bar, sliding-drive	4210 4752 91
RTP4100	Reaction bar, steel bar	4210 4757 91
RTP4100	Reaction bar, square bracket	4210 4758 91

**NOTE:** All reaction bars includes a snap ring



## SERVICE KITS

Model	Description	Ordering No.
RTP1300	Gear / Motor housing	4082 0125 90
RTP4100	Gear / Motor housing	4082 0116 91
RTP1300	Gear / Motor / Motor housing	4081 0510 90
RTP4100	Gear / Motor / Motor housing	4081 0504 90

COMMITTED TO SUSTAINABLE PRODUCTIVITY

[www.atlascopco.com](http://www.atlascopco.com)

Atlas Copco